

# Sweden

## Water Resources and Shoreland Habitats



This map is nonregulatory and is intended for planning purposes only

— Organized  
└ Towns

### Maine Stream Habitat Viewer Road Stream Crossings

⊗ Barrier

⊖ Potential  
Barrier

\*Crossings on  
private roads  
not shown.

[Find crossing details on the  
Stream Viewer -](#)

[beginningwithhabitat.org/maps](https://beginningwithhabitat.org/maps)

Wild Brook  
Trout Priority  
Conservation  
Areas

Reflects surveys on selected Maine streams.

Wetlands

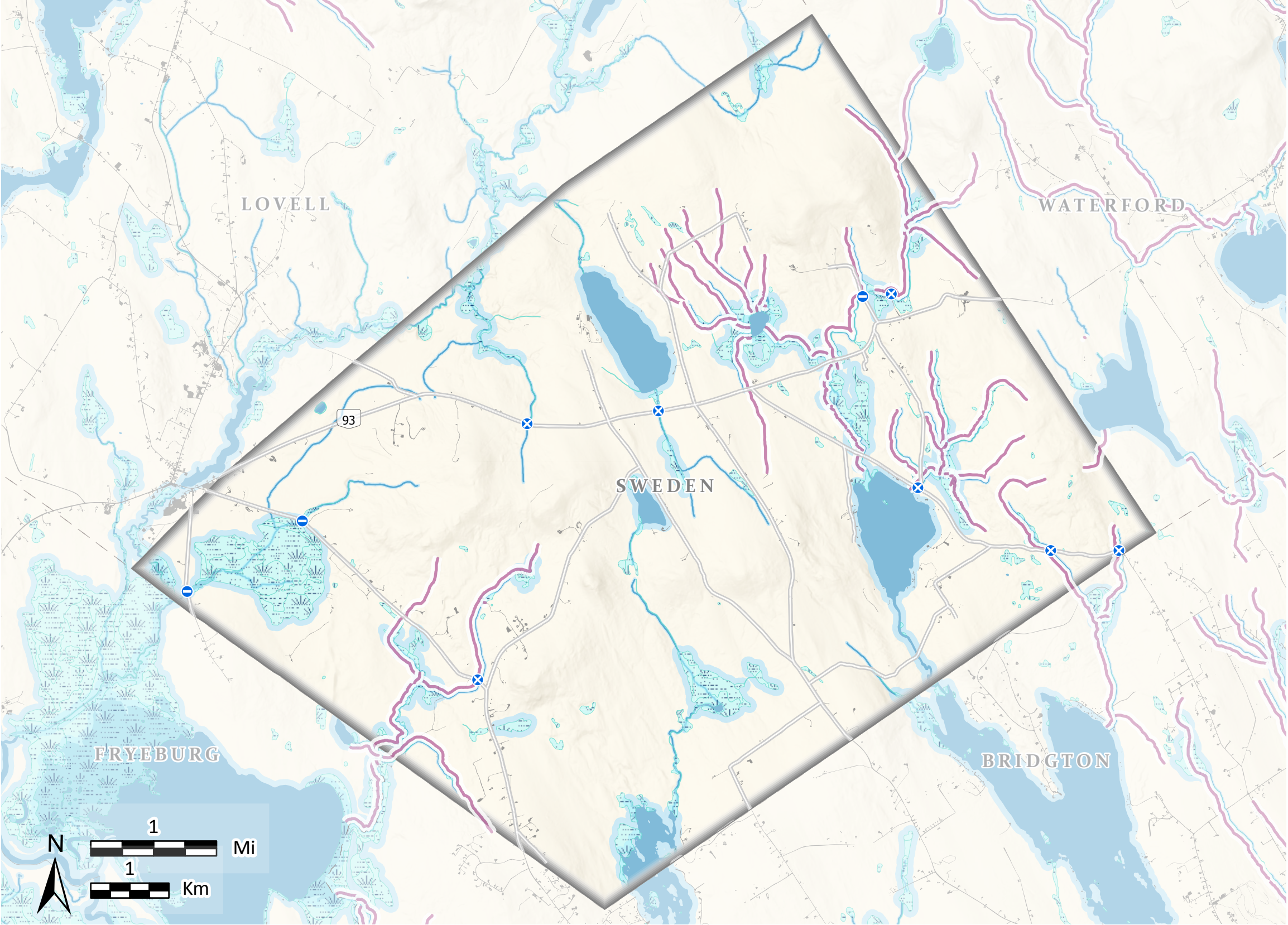
National Wetlands Inventory (NWI) uses  
aerial photographs to approximate wetland  
locations. NWI data typically under represents  
the presence of wetlands on the landscape.

Shoreland  
Areas

Areas are delineated by ME Dep. of  
Environmental Protection's Mandatory  
Shoreland Zoning Act, which includes areas  
within 250 feet of great ponds, rivers, and  
wetlands, and within 75 feet of streams. The  
regulations within each shoreland zone  
depends on the town, and towns may regulate  
greater areas than what is shown here. For  
more information, please visit: [https://  
www.maine.gov/dep/land/slz/](https://www.maine.gov/dep/land/slz/)

Developed

Impervious surfaces including buildings and  
roads.



**Beginning with Habitat (BwH)** equips Maine communities, landowners, and conservation partners with tools to protect, restore, and connect important habitats and ecosystems in a changing climate. [www.beginningwithhabitat.org](http://www.beginningwithhabitat.org)

April 2025

TOWNSHIP BOUNDARIES - Maine Office of GIS (2020)  
ROADS - ME Office of GIS, ME Dept of Transportation (2021)  
HYDROLOGY - USGS National Hydrography Dataset (2016 )  
DEVELOPED - CCAP NOAA impervious land cover (2022)  
NATIONAL WETLANDS INVENTORY - U.S. Fish & Wildlife Service (2020)  
SHORELAND AREAS - ME Office of GIS, ME Natural Areas Pgm(2011)

BROOK TROUT PRIORITY CONSERVATION AREAS - ME Dept of Inland Fisheries & Wildlife (2020)  
MAINE HERITAGE FISH WATERS - ME Dept of Inland Fisheries & Wildlife (2022)  
ATLANTIC SALMON HABITAT - ME Dept of Marine Resources (2024)  
SHELLFISH - ME Dept of Marine Resources (2010)  
ME ROAD STREAM HABITAT CROSSINGS - ME Dept of Inland Fisheries & Wildlife, US Fish and Wildlife Service (2022)